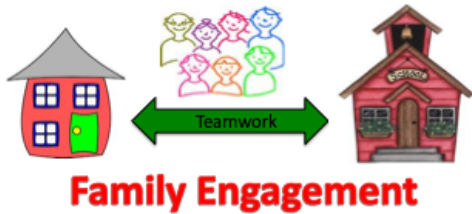




Counselor's Corner  
melissa.watson@slcschools.org  
801.578.8537

**Classroom Lessons:** This month several classrooms will receive a lesson on trustworthiness; students will be learning the importance of being honest and building trust. 4<sup>th</sup> through 6<sup>th</sup> grade students will be having a college and career awareness day on March 31<sup>st</sup> where they will hear from different representatives about their college and career options. **Counseling:** There will be counseling groups starting for students who could use extra support in learning social skills, or managing feelings of anxiety. Please let me know if your student could benefit from these groups or meeting individually; referral forms for counseling are available in the front office. **Resources:** Please let me know if there are any significant needs with which your family needs help.



**Let's Work Together!**

Research shows that **family involvement** promotes student success. Students with involved parents are more likely to

- \*Earn higher grades and pass their classes,
  - \*Attend school regularly and have better social skills,
  - \*Go on to postsecondary education.
- When families, schools, and communities work together,
- \*Student achievement improves,
  - \*Teacher morale rises,
  - \*Communication increases,
  - \*Family, school, and community connections multiply.



Parent Tonya Allred attended our February School Community Council Meeting and provided insightful feedback. Wouldn't you like to be mentioned in the Newsletter too? Attend our March meeting and you just might!



**After School Program**

The After School program now has a cellular phone so you can reach someone when no one is in the office. The phone number is 801.201.5610.

## Principal's Message

If you have been watching or reading the news, you've heard about the increasing number of schools that have had emergency lockdown situations. These have happened for multiple reasons. It might have been a weapon, a bomb threat, a stranger in the building, or any other situation that puts students at risk. We are all deeply concerned with keeping our Newman students and staff safe. Because of this concern, we have put several new policies into place.

I would like to clarify some of our new policies. The doors are opened for the students that are lined up to enter the building when the first bell rings at 8:05am. These doors remain open until the tardy bell (8:10). After that, only the **FRONT DOORS** will be open. The front door stays unlocked until 8:30. Consequently, after the tardy bell rings at 8:10, we want students coming through the front door. Keep in mind that after 8:15, students are considered tardy and they must stop at the office to be given a tardy slip to take to their teacher. After the front doors are locked, we are happy to allow a parent, guardian, grandparent, sibling, or anyone else that has business, in our school when they ring the bell. Please don't be offended if we say "Can I help you?" before unlocking the door. We are just being cautious. We have also directed our students and staff to not let someone "piggyback" or follow him or her inside when the door has been opened and they are coming into or leaving the building.

We are discouraging parents (and other adults) from walking students to and from class. By this time of year, we are encouraging all our students to be independent and go to their classrooms. But this is not the only reason. We must monitor the adults in the building, both who they are and where they are going. When many adults come into the building at the same time, it makes it very easy for an unknown adult to enter with everyone else. Of course, we know most of our parents and guardians...however, because we are receiving new students weekly, there are some that are new to us. I know this has been upsetting to a few. Please believe that we are only concerned with student safety.

We require *all* adults (including school district employees) to sign in at the office before proceeding into the building, but many walk past the signs and the office and go directly down the hall. Faculty and/or staff who may not know the adult get upset and call the office. When this happens, one of the office staff must find this person and redirect him or her to the office to sign in. Often, when a teacher or staff member sees an unknown adult without a visitor sticker, he or she must stop what they are doing and step into the hallway to ask that person if they need assistance and direct the visitor to the office. This often upsets our teachers, staff and our students, and takes time away from teaching.

An additional concern is our drop-off lane, drive through lane and crosswalk from the parking lot to the front of the school. We do have a teacher on duty at the front of the school each morning. Their duties include supervising students, keeping an eye on students crossing in the crosswalk, and assisting in keeping the traffic moving efficiently and safely. But we only have enough staff available to have one teacher on duty. We ask that you are particularly careful when dropping off students in the morning. Many, like myself, are busy in committee meetings, meeting with teachers, parents, or students, or preparing for the day's activities. We simply do not have the staff to have multiple adults on duty. We welcome any volunteers that would like to help us monitor in the mornings. If you are interested, please contact the office.

Mr. Aragon, our Assistant Principal, is often out on duty when possible, however he is only part-time in our school. We have a great amount of trust in our parents to always consider the safety of our students by driving slowly, parking only in design-

# MARCH

**Coming Events:**

- 1 School Community Council Meeting at 6PM
- 2 School Out at 12:40PM
- 3 No School
- 8 Mobile Food Truck
- 9 PTA at 6PM
- 10 Tiger Hunt
- 16 Family Art Night at 6:30PM
- 24 Payment for Yearbooks Due

It's Time to Order Your.....  
**YEARBOOK!**



**It's Yearbook Time!**

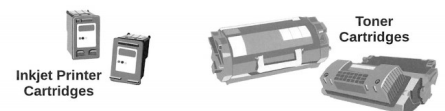
Yearbooks are \$15 and the deadline is March 24th. Checks can be made to: Newman PTA. Do people still use checks?

# RECYCLE WITH US

FOR A CLEAN EARTH, FOR A BRIGHTER FUTURE.



You'll be helping us earn cash and supplies while keeping our Earth clean and green!



**Principal's Message Continued...**

nated areas, and assisting in keeping our drop-off zone moving efficiently. Soon, we will have several students from our Safety Team in front, greeting students that are getting out of cars and coming onto the campus, helping them with getting backpacks on, and carrying materials into the school, etc. This would be considered our **Valet Drop-off & Pick-Up Zone**.

Our job is to keep the school as safe as possible. For those that have been helpful, patient, and considerate regarding these new policies, thank you so much! Please understand that we are always working to increase the safety for *our* students, *your* children, to the maximum extent possible. We love and care about each member of our Newman family. We will strive to continually keep safety first.