



## Principal's Message

Spring is in the air as we continue to have a wonderful year of learning at Newman. As we enter the month of April, our teachers and staff continue to introduce and review rigorous academic skills and content across all grade levels. With roughly 3 weeks remaining before our testing begins, it is very important that our students are at school each day and they are eager to actively participate in learning. During this time, we want to assist our students in being successful by ensuring that they are having a good breakfast, they are well-rested from a good night's sleep and they are at school on time each morning. We thank you in advance for your support as our students do their best during our testing.

In addition to testing, we are keeping the "new" in Newman by including some new activities and events on our school calendar. We have added signs in our main hallway above the cafeteria doors and above the rear doors. This allows us to recognize classes, students, and teachers for doing things that are "PAWSome"! Also, we now have the Newman Tigers basketball team! Our team is made up of girls and boys from the 5<sup>th</sup> and 6<sup>th</sup> grades and our cheerleaders from the 1<sup>st</sup> - 6<sup>th</sup> grades. They will play 5 school teams from our area. All games will be played at Escalante Elementary on some Tuesday and Friday afternoons beginning April 21<sup>st</sup>. We invite you to come out and help us cheer for our team. GO TIGERS! Spring Break will take place from Monday, April 10<sup>th</sup> through Friday, April 14<sup>th</sup>. Students will return to school on Monday, April 17<sup>th</sup> and the PTA fundraiser will also begin on this day and continue through Friday, April 21<sup>st</sup>. On April 27<sup>th</sup>, we will be having our Leadership Day in conjunction with our Leader in Me program. The students will be showcasing their leadership skills including the 7 Habits. They will be involved in a variety of activities and presentations of their leadership expertise. For information about any of these activities, please contact the office.

As always, we appreciate the efforts of all members of our Newman family that support our school and our students!

Sincerely,  
Principal Andrews



### Coming Events:

- 5 School Community Council Meeting at 6PM/Mobile Food Truck
- 7 School Out: 12:40PM/Tiger Hunt
- 10-14 No School-Spring Break
- 20 DIBELS Testing
- 21 Basketball at Escalante at 3:00
- 25 Basketball at Escalante at 3:45
- 27 1st Grade to Wheeler Farm
- 27 Leadership Day
- 28 Basketball at Escalante at 4:15

Counselor's Corner  
melissa.watson@slcschools.org  
801.578.8537

**Classroom Lessons:** This month several classrooms will receive a lesson on perseverance and resiliency. 4<sup>th</sup> through 6<sup>th</sup> grade students will be wrapping up their college and career exploration through setting career goals. **Counseling:** There will be counseling groups starting for students who could use extra support in learning social skills, or managing feelings of anxiety. Please let me know if your student could benefit from these groups or meeting individually; referral forms for counseling are available in the front office. **Resources:** Please let me know if there are any significant needs with which your family needs help.



## Family Engagement

### Join the Family Engagement Team!

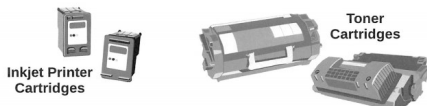
Due to the interest of our school community, we are going to begin a new group called the Family Engagement Team. The team will include the school administration, teachers and parents/guardians. The purpose of the team is to increase family involvement in school and we would love to have many parents included. Who would best know how to engage families in school? Families of course! Contact Mr. Aragon at 801.578.8537 or email daniel.aragon@slcschools.org to express your interest or nominate a friend.

## RECYCLE WITH US

FOR A CLEAN EARTH, FOR A BRIGHTER FUTURE.



You'll be helping us earn cash and supplies while keeping our Earth clean and green!



Guess who our newest parent participant in School Community Council was from March? Midori Murakami attended and was very helpful to the decision making process. Will you be next? Come to the next meeting on April 5th at 6PM!



### It's Time to Test!

Every year our state gives our school a grade and everyone in our building is evaluated based on how well our students perform at the end of the year. We realize this is unfair to all schools to use only one test to measure how amazing our school is doing. We already know we have awesome students, families and teachers, but want to do our best on the tests anyway. Effective test taking tips are the same as the tips to being successful ALL the time:

- Get a lot of rest
- Little to no stress
- Eat a good breakfast

Testing will continue through May 18th with makeups taking place the following week. We know our students are going to do well! What do you expect from a Newman Tiger?